

NZ DIPLOMA IN MUSIC 2025

Information for international applicants

Napier

If music is your passion then this one year full-time Diploma will help you develop your practical skills in areas such as performance, songwriting and sound production.

Individual and group projects will prepare you for a diverse and exciting career in the music industry.

This one year programme uses project based learning. You will study popular music with an emphasis on performance practice and songwriting, as well as using DAWs and live instruments to create, record and release music.

What you will learn:

- The ins and outs of writing music professionally.
- Incorporating Ableton Live and other software into performance.
- Advanced performance and recording methods specific to your instrument.
- Multi-tracking and live recording in a professional studio environment.
- Audio engineering and editing in Pro Tools and other software.
- Writing and arranging music for small to large bands.
- Finding out which funding bodies apply to you and creating usable grant/scholarship applications.
- Utilising social media and other online platforms to boost your professional profile and market your events.
- Collaboration with Screen Production, Fashion, Visual Arts and Design students.

With your diploma completed successfully you can continue on to the second year of the Bachelor of Creative Practice.

CAREER OPPORTUNITIES

You will gain a broad introduction and understanding of the different aspects of the industry which will prepare you for employment or to go on to further study at diploma or degree level. Possible jobs and career opportunities can include:

- Performing artist
- Music producer
- Songwriter or composer
- Session musician
- Specialist instrument tutor
- Assistant recording engineer
- Assistant performance engineer

Continue your study pathway with the Bachelor of Creative Practice followed by the Bachelor of Professional Creative Practice (Honours) degree or a Masters degree.



NZ DIPLOMA IN MUSIC

Start	17 February
Length	1 year full-time
Level	5
Credits	120
Fees¹	NZ\$26,000
IELTS	5.5 (academic) with no band lower than 5.0 or equivalent OR accepted international equivalent qualification
Class times	On-campus classes are scheduled between 9.00am and 3.00pm, Monday to Friday. Approximately 20 classroom hours per week.
Self-directed study	Approximately 17.5 hours per week.

CAREER OUTLOOK

Visit the following websites for the latest information about job opportunities in New Zealand for your chosen career path.

careers.govt.nz | mbie.govt.nz | immigration.govt.nz

¹. All fees shown in this information are in New Zealand dollars and include Goods and Services Tax (GST) at current rates. If you need to study for more than one year to complete your qualification, your fees in the second year, and subsequent years, will not be known when you first enrol.



TIMETABLE

Your study time will be made up of contact time (class times, tutorials, industry-based learning) and non-contact time (your own self-directed study).

CONTACT TIME

On-campus classes are usually scheduled between 8.00am-5.00pm, Monday to Friday.

Full-time students spend approximately 20 hours on campus per week.

NON-CONTACT TIME

You should plan to spend 17.5 hours on self-directed study per week.

ENTRY CRITERIA¹

The academic entry requirement for the NZ Diploma in Music is either:

- University Entrance, as defined by the NZQA; or
- Evidence regarded as sufficient by the Discipline Leader of the capability to undertake and complete the programme of study; or
- At the discretion of EIT, where the applicant is over 20 years of age and demonstrates the capability to undertake and complete the programme of study.

All applicants will be required to attend an interview/audition with Discipline Leader.

Applicants must be able to play a musical instrument and/or sing confidently in front of others.

Applicants who have experience with music-making software will also be considered.

ENGLISH LANGUAGE ENTRY REQUIREMENTS²

PTE (Academic) score of 50 with no band score lower than 42 or IELTS (Academic) score of 5.5 with no band score lower than 5.0 (or equivalent) achieved within the last two years.

ASSESSMENTS

Each course will be assessed for the required NZQA graduate outcomes so that you will have fulfilled all these by the completion of all courses.

FACILITIES

IDEAschool's Fashion studios are fully set-up with industrial equipment including design software and hardware, facilities for blog and web-design and sewing and fashion production machinery.

Adobe Photoshop and Illustrator software is taught in computer labs.

THE EXPERIENCE YOU NEED & THE SUPPORT TO SUCCEED

When you study at EIT you'll get the kind of experiences that will help you gain the knowledge and skills to get ahead.

You'll also be supported by lecturers and tutors who are here for you, within a learning environment where you are treated as an individual, not just a number. They'll know your name and you'll receive one-on-one attention to make sure you get the support to succeed.



1. To study onshore in New Zealand, students must meet current Immigration New Zealand requirements for a student visa. For more information please see the [Immigration New Zealand website](#).

2. Further information about NZQA English language entry requirements for international students can be found at www2.nzqa.govt.nz/tertiary/english-language-entry-requirements-for-international-students/



COURSE DESCRIPTIONS

COURSE NO.	BRIEF DESCRIPTION	LEVEL	CREDITS
DM5.50	Career Plan This project develops the knowledge and skills required to explore options for an individual career plan in the music industry.	5	30
DM5.60	Covers Performance This project allows the students to develop the knowledge and skills to produce and deliver a high quality performance of multi-genre cover material. The performance will be staged in front of a live audience and demands a high level of stagecraft.	5	30
DM5.10	Single Release This project is an introduction to composition and sound production. Through the use of DAWs, the students will develop the basic knowledge and skills required to record and release a piece of music.	5	30
NZDF5.12	Studio Performance Through the production of this performance, students will develop the knowledge and skills required to collaboratively create, coordinate and mix a complete studio performance using advanced recording techniques.	5	30

THE EXPERIENCE YOU NEED & THE SUPPORT TO SUCCEED

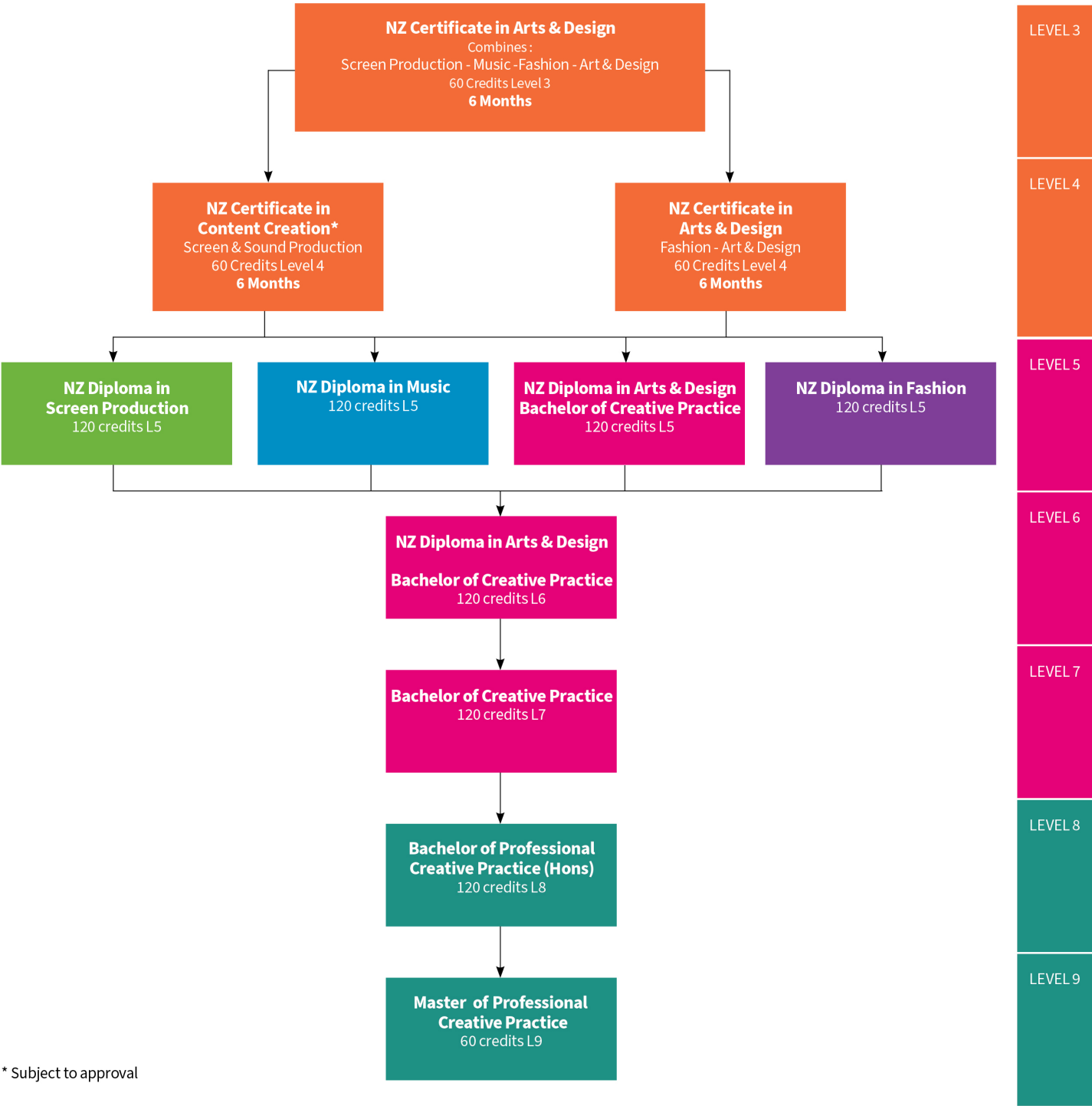
When you study at EIT you'll get the kind of experiences that will help you gain the knowledge and skills to get ahead.

You'll also be supported by lecturers and tutors who are here for you, within a learning environment where you are treated as an individual, not just a number. They'll know your name and you'll receive one-on-one attention to make sure you get the support to succeed.



Disclaimer: All information pertains to international students, and is correct at the time of publication but is subject to change without notice. The programme fees, other costs, entry requirements, duration and programme start dates are for 2025 and are listed as a guide only. Conditions apply. EIT (a Business Division of Te Pūkenga – New Zealand Institute of Skills and Technology) reserves the right to cancel or postpone any programme or course for any reason and shall not be liable for any claim other than that proportion of the programme fee which the cancelled or postponed portion bears.

PROGRAMME PATHWAY



* Subject to approval